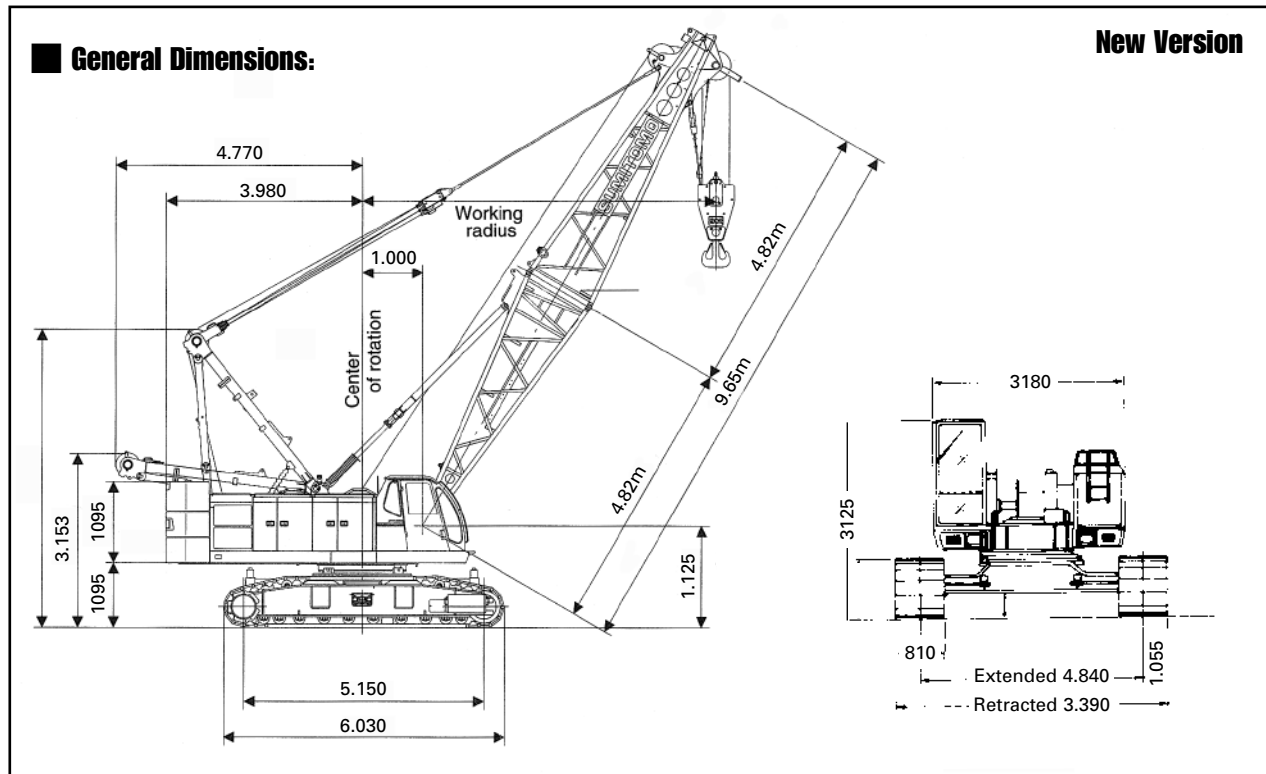


# SUMITOMO SC 650



Max-Lift & Radius	65t x 4.0mm
Min boom Length	9.65m
Max Boom Length	43.20m
Fly Jib Lengths	9.15m - 18.30m
Max Boom with Fly	40.15. - 18.30m
Main & Aux Winch Speed Hoist & Lowering	95 - 2m/min
Boom Hoist & Lowering	62 - 3m/min
Swing Speed	3.4rpm
Travel Speed Max	1.6/1.1km/h
Engineer Make & Model	HINO H07CT
Rated Output	132.4Kw/2.100min <sup>-1</sup> (180PS/2.100rpm)
Gradient	40% (22°)
Ground Pressure	73.1kpa-0.75Kg/cm <sup>3</sup>
Working Weight	66.2t

Hook Block Weights			
65t	35t	20t	6.5t
850Kgs	500Kgs	400Kg	330Kgs

No of Falls	LOAD t
10	65.0
9	58.5
8	52.0
7	45.5
6	39.0
5	32.5
4	26.0
3	19.5
2	13.0
1	6.5



HEAD OFFICE:  
N R C PLANT LTD.  
NEAGRON HOUSE, STANFORD ROAD,  
ORSETT, ESSEX. RM16 3BX  
Telephone: 01375 361616  
Fax: 01375 361818

sales@nrcplant.co.uk  
www.nrcplant.co.uk

# SC 650-2 LIFTING CAPACITIES MAIN BOOM

(in metric tons)

Working radius (m)	9.65	12.70	15.75	18.80	21.85	24.90	27.95	31.00	34.05	37.0	40.15	43.20
	3.1	65.00										
3.5	65.00	65.00/3.6										
4.0	65.00	65.00	61.00/4.2									
4.5	55.90	55.80	55.00	51.40/4.7								
5.0	46.70	46.60	46.40	46.30	43.50/5.2							
5.5	40.00	39.90	39.80	39.70	39.60	37.50/5.7						
6.0	35.00	34.90	34.80	34.70	34.60	34.50	32.20/6.3					
7.0	27.90	27.80	27.70	27.60	27.50	27.40	27.20	27.10	24.70/7.5			
8.0	23.10	23.00	22.90	22.80	22.70	22.60	22.50	22.40	22.30	22.20	20.50/8.5	
9.0	19.70	19.60	19.50	19.40	19.30	19.20	19.10	19.00	18.90	18.80	18.70	18.50
10.0	18.20/9.6	17.10	17.00	16.90	16.80	16.70	16.60	16.50	16.40	16.30	16.20	16.10
12.0		13.40	13.30	13.20	13.10	13.00	12.90	12.80	12.70	12.60	12.50	12.40
14.0		13.10/12.2	10.90	10.80	10.70	10.60	10.50	10.40	10.30	10.20	10.10	10.00
16.0			10.00/14.9	9.00	8.90	8.80	8.70	8.60	8.50	8.40	8.30	8.20
18.0				8.00/17.5	7.60	7.60	7.40	7.30	7.20	7.10	7.00	6.90
20.0					6.60	6.60	6.40	6.30	6.20	6.10	6.00	5.80
22.0					6.50/20.1	5.70	5.60	5.40	5.40	5.20	5.10	5.00
24.0						5.40/22.8	4.90	4.80	4.70	4.50	4.50	4.30
26.0							4.40/25.4	4.20	4.10	4.00	3.90	3.70
28.0								3.70	3.60	3.50	3.40	3.30
30.0									3.20	3.10	3.00	2.80
32.0									3.00/30.7	2.70	2.60	2.50
34.0										2.50/33.3	2.30	2.20
36.0											2.00	1.90
38.0												1.60
No. of part line	10	10	10	8	7	6	5	5	4	4	4	3

## Notes

- Capacities shown are in metric tons and are determined according to BS 1757 - over the side - with machine standing level on firm supporting surface under ideal job conditions. Deductions from the lifting crane capacities must be made for weight of hook block.
- When handling load off main boom peak sheaves in case of mounting jib on boom, the following deductions in machine lifting capacities must be made.

## WORKING WEIGHT AND GROUND PRESSURE

Kind of hook block	65t	35t	20t	6.5t	Jib length (m)	6.10	9.15	13.71	18.30
	0.85t	0.50t	0.40t	0.33t		Weight to be deducted (t)	0.75	1.50	2.10
Weight of hook block (t)	65t	35t	20t	6.5t	Shoe width	810mm	66.2t	Pressure	075 kgs
	0.85t	0.50t	0.40t	0.33t		Shoe width	810mm	66.2t	Pressure