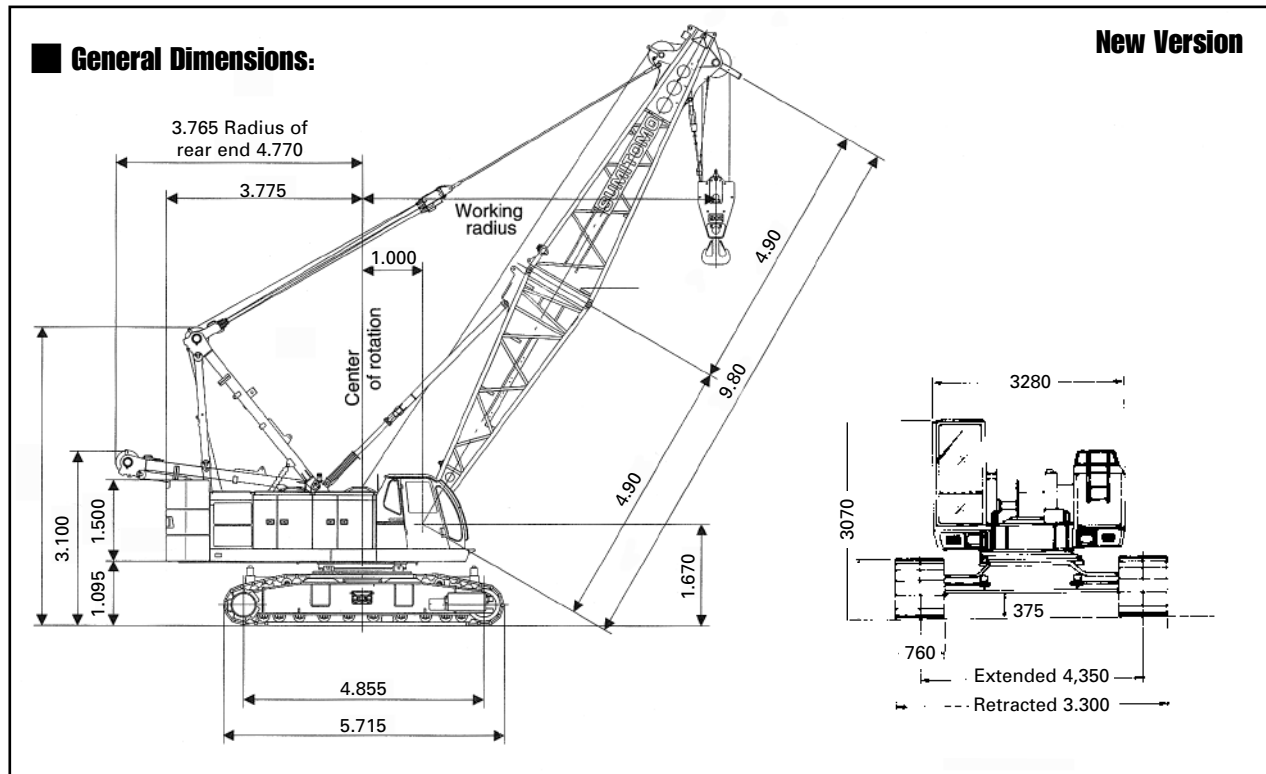


SUMITOMO SC 500-2



Max-Lift & Radius	50t x 3.1m
Min boom Length	9.80m
Max Boom Length	43.35m
Fly Jib Lengths	6.10m - 15.25m
Max Boom with Fly	31.15m - 15.25m
Main & Aux Winch Speed Hoist & Lowering	110 - 2.0m/min
Boom Hoist & Lowering	62-3.0m/min
Swing Speed	4.3RPM
Travel Speed Max	2.1Km/Hr
Engineer Make & Model	HINO H07CT
Rated Output	132.4Kw/2.100min (180PS/2100RPM)
Gradient	40% (22°)
Ground Pressure	68 KPA (0.69Kg/cm ³)
Working Weight	52.9t

Hook Block Weights			
50t	20t	15t	5.8t
750Kg	400Kg	360Kg	120Kgs

No of Falls	LOAD t
9	50.00
8	42.00
7	35.60
6	29.30
5	25.00
4	18.50
3	15.40
2	11.20
1	5.80



HEAD OFFICE:
N R C PLANT LTD.
NEAGRON HOUSE, STANFORD ROAD,
ORSETT, ESSEX. RM16 3BX
Telephone: 01375 361616
Fax: 01375 361818

sales@nrcplant.co.uk
www.nrcplant.co.uk

SC 500-2 LIFTING CAPACITIES MAIN BOOM

Counter Weight A-B (16t) (in metric tons)

Boom Length (m)		Boom Length (m)											No. of part line
Radius (m)	9.80	12.85	15.90	18.95	22.00	25.05	28.10	31.15	34.20	37.25	40.30	43.35	Radius (m)
3.1	50.00												3.0
3.7	50.00	50.00											3.7
4.0	47.10	46.10	42.00/4.2										4.0
4.5	38.40	38.30	38.20	35.60/4.7									4.5
5.0	32.20	32.10	32.00	31.90	29.30/5.3	25.00/5.8							5.0
6.0	24.00	23.90	23.80	23.75	23.60	23.50	22.00/6.3						6.0
7.0	19.20	19.10	19.00	18.90	18.80	18.75	18.60	18.50	17.00/7.4				7.0
8.0	16.30	16.25	16.10	16.00	15.90	15.80	15.70	15.60	15.50	15.40	14.10/8.4		8.0
9.0	13.90	13.80	13.75	13.60	13.50	13.40	13.30	13.20	13.10	13.00	12.90	12.80	9.0
10.0	12.80/9.6	12.00	11.90	11.80	11.70	11.60	11.50	11.40	11.30	11.25	11.10	11.00	10.0
12.0		9.60	9.50	9.40	9.30	9.20	9.10	9.00	8.90	8.80	8.75	8.60	12.0
14.0			7.70	7.60	7.50	7.50	7.40	7.30	7.20	7.10	7.00	6.90	14.0
16.0			7.20/14.9	6.50	6.40	6.30	6.25	6.10	6.00	5.90	5.80	5.70	16.0
18.0				5.70/17.6	5.40	5.30	5.20	5.10	5.00	5.00	4.90	4.80	18.0
20.0					4.80	4.70	4.60	4.50	4.40	4.30	4.20	4.10	20.0
22.0						4.10	4.00	3.90	3.80	3.75	3.60	3.50	22.0
24.0						3.90/22.8	3.50	3.40	3.30	3.20	3.10	3.00	24.0
26.0							3.20/25.5	2.90	2.80	2.80	2.70	2.60	26.0
28.0								2.60	2.50	2.50	2.40	2.30	28.0
30.0									2.25	2.10	2.10	2.00	30.0
32.0									2.10/30.8	1.80	1.80	1.70	32.0
34.0										1.70/33.4	1.50	1.40	34.0
No. of parts line	9	9	8	7	6	5	5	4	4	3	3	3	No. of part line

1. Capacities shown are in metric tons and are determined according to BS 1757 over the side with machine standing level on firm supporting surface under ideal site conditions.

2. Deduction from rated capacities must be made for weight of hook block, sling, spreader bar, or other suspended gear.

3. High gantry required and side frames must be extended for all operating conditions.

4. If number of parts of line exceed the value shown at the table the hook can't be lowered on the ground.

5. The maximum boom length for clamshell and bucket work is 18.95m.

6. HOIST REEVING

7. When operating of the main boom hook block with jib or short jib on boom, the following deductions in machine lifting capacities must be made.

Jib length (m)	6.10	9.15	12.20	15.25	Short
Weight to be deducted (t)	0.75	0.90	1.05	1.20	0.3

8. WORKING WEIGHT AND GROUND PRESSURE

Shoe width	Weight	Pressure
760mm	52.9t	68Kpa (0.69kg/cm ²)

with basic boom and counter weight

Kind of hook block	Weight of hook block	MAX. LOAD (T)									
		9	8	7	6	5	4	3	2	1	
501	0.75 kgs	50.0	42.0	35.6	29.3	25.0	18.5	15.4	11.2	5.8	
151	0.35 kgs					15.0	11.2	5.8			
5-8t	0.12 kgs										
Number of PARTS LINE		9	8	7	6	5	4	3	2	1	