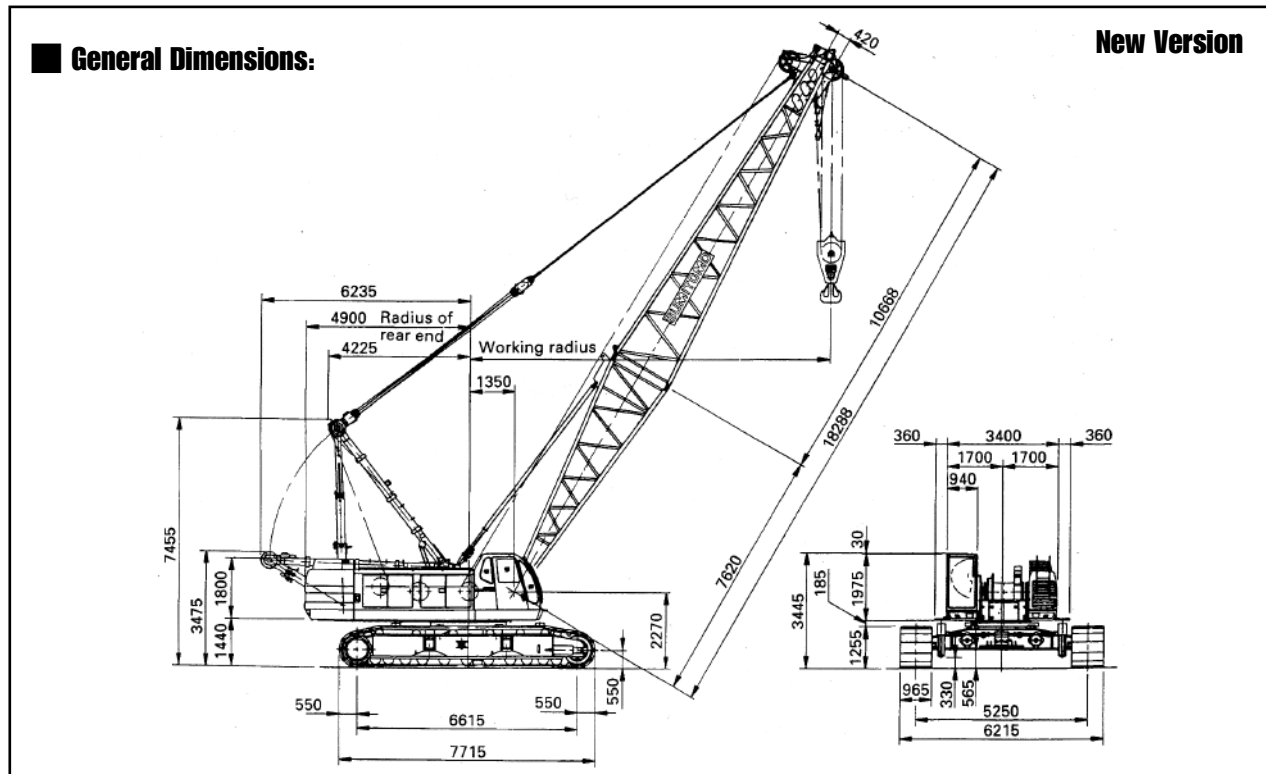


SUMITOMO SC 1000-2S



Max-Lift & Radius	100.0t 5m
Min boom Length	18.30m
Max Boom Length	73.15m
Fly Jib Lengths	12.20m - 24.40m
Max Boom with Fly	64.00m - 18.30m
Main & Aux Winch Speed Hoist & Lowering	97 - 2MPM
Boom Hoist & Lowering	46 -2MPM
Swing Speed	2.1RPM
Travel Speed Max	1.4/1.0Km/nr
Enginer Make & Model	Mitsubishi 6D24-T
Rated Output	184Kw/2.000min (250PS/2000RPM)
Gradient	30% (17°)
Ground Pressure	88.4KPA (0.90Kg/cm ²)
Working Weight	115 - 2t

Hook Block Weights			
100t	50t	30t	11t
1.4t	0.9t	0.73t	0.4t

No of Falls	LOAD t
10	100t
9	90.0t
8	80.0t
7	70.0t
6	60.t
5	50.0t
4	40.0t
3	30.0t
2	20.0t
1	11.0t



HEAD OFFICE:
N R C PLANT LTD.
NEAGRON HOUSE, STANFORD ROAD,
ORSETT, ESSEX. RM16 3BX
Telephone: 01375 361616
Fax: 01375 361818

sales@nrcplant.co.uk
www.nrcplant.co.uk

SC 1000-2 LIFTING CAPACITIES MAIN BOOM

(in metric tons)

18.30	21.35	24.40	27.45	30.50	33.50	36.55	39.60	42.65	45.70	48.75	51.80	54.85	57.90	60.95	64.00	67.05	70.10	73.15	Boom length Working radius (m)	
5.0	100.0																			5.0
5.5	100.0	98.1																		5.5
6.0	94.0	93.7	86.9	77.0/6.5																6.0
7.0	81.1	80.8	80.6	76.0	66.0/7.1	62.2/7.6														7.0
8.0	70.7	70.6	70.5	70.5	66.0	61.3	55.0/8.2	50.7/8.7												8.0
9.0	59.0	58.9	58.8	58.8	58.7	58.6	54.9	50.3	44.0/9.2	41.9/9.8										9.0
10.0	50.6	50.5	50.4	50.3	50.2	50.1	50.1	49.4	44.0	41.7	33.0/10.3	31.4/11.3	27.9/11.9							10.0
12.0	39.1	39.0	38.9	38.8	38.7	38.5	38.5	38.3	38.3	38.1	33.0	30.9	27.8	22.0/12.5	22.0/13.0	21.2/13.5				12.0
14.0	31.8	31.6	31.4	31.4	31.2	31.1	31.0	30.8	30.8	30.6	30.4	29.9	27.4	22.0	22.0	21.0	19.3/14.1	17.4/14.6		14.0
16.0	26.6	26.4	26.2	26.2	26.0	25.9	25.8	25.6	25.5	25.4	25.3	25.2	24.8	22.0	22.0	20.2	20.2	18.1	16.1	16.0
18.0	24.0/17.3	22.6	22.4	22.3	22.2	22.0	21.9	21.7	21.7	21.5	21.4	21.3	20.9	20.9	20.8	18.4	16.4	14.5	18.0	
20.0		19.7	19.5	19.4	19.2	19.1	19.0	18.8	18.7	18.5	18.4	18.3	18.1	17.9	17.9	16.8	14.9	13.1	20.0	
22.0			17.2	17.1	16.9	16.7	16.6	16.4	16.3	16.2	16.1	15.9	15.8	15.6	15.5	15.4	13.7	12.0	22.0	
24.0			16.6/22.6	15.2	15.0	14.8	14.7	14.5	14.4	14.3	14.2	14.0	13.8	13.6	13.6	13.4	12.6	10.9	24.0	
26.0				14.2/25.3	13.4	13.3	13.2	12.9	12.8	12.7	12.6	12.4	12.2	12.0	12.0	11.8	11.6	11.5	10.0	26.0
28.0					12.2/27.9	12.0	11.8	11.6	11.5	11.3	11.2	11.1	10.9	10.6	10.6	10.5	10.3	10.1	9.2	28.0
30.0						10.9	10.7	10.5	10.4	10.2	10.1	9.9	9.8	9.5	9.5	9.3	9.1	9.0	8.5	30.0
32.0						10.6/30.5	9.8	9.5	9.4	9.2	9.1	8.9	8.8	8.6	8.5	8.3	8.1	8.0	7.8	32.0
34.0							9.3/33.2	8.7	8.6	8.4	8.3	8.1	7.9	7.7	7.6	7.5	7.3	7.1	6.9	34.0
36.0								8.0/35.8	7.8	7.7	7.5	7.3	7.2	6.9	6.9	6.7	6.5	6.3	6.2	36.0
38.0									7.2	7.0	6.8	6.7	6.5	6.3	6.2	6.0	5.8	5.6	5.4	38.0
40.0									7.0/38.5	6.4	6.3	6.1	5.9	5.7	5.6	5.4	4.9	4.7	4.0	40.0
42.0									6.1/41.1	6.1	5.7	5.6	5.4	5.1	5.0	4.8	4.5	4.3	4.1	42.0
44.0									5.3/43.7	5.1	4.9	4.9	4.6	4.6	4.5	4.3	4.0	3.8	3.6	44.0
46.0										4.7	4.4	4.4	4.1	4.0	3.8	3.5	3.3	3.1	46.0	
48.0										4.6/46.4	4.0	3.7	3.7	3.5	3.3	3.0	2.8	2.6	48.0	
50.0											3.8/49.0	3.3	3.3	3.1	2.9	2.6	2.4	2.2	50.0	
52.0												3.0/51.7	2.8	2.5	2.3				52.0	
54.0													2.4	2.2					54.0	

Notes

1. Capacities shown are in metric tons and are determined according to BS 1757 - over the side - with machine standing level on firm supporting surface under ideal job conditions. Deductions from the lifting crane capacities must be made for weight of hook block.

2. See duty charts

3. **WORKING WEIGHT AND GROUND PRESSURE**

Kind of hook block	100t	50t	30t	11t
Weight of hook block (t)	1.4t	0.9t	0.73t	0.4t

Jib length (m)	12.20	18.30	24.40
Weight to be deducted (t)	2.0t	2.8t	3.4t

Shoe width	Weight	Pressure
9.65mm	115.2t	88.4 Kpa (0.90Kg/cm ²)