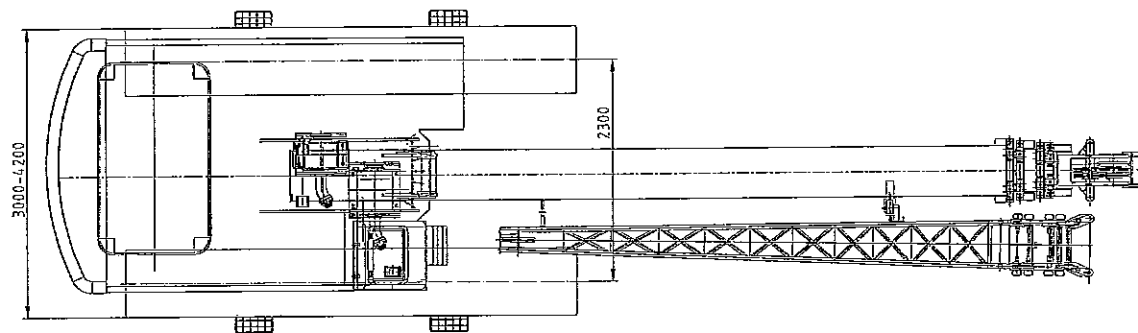
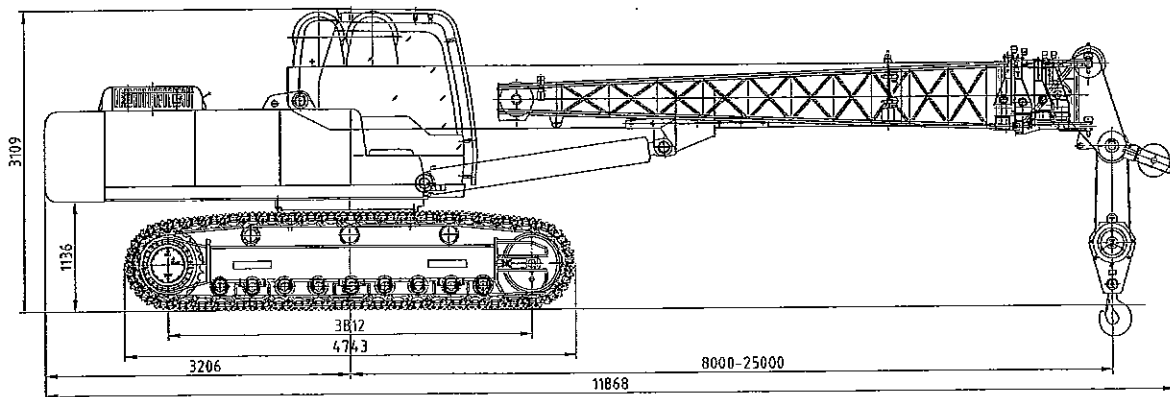


LOGICRANE 25.25

SPECIFICATIONS

Engine Tier III Iveco NEF		158HP@2000rpm
Designed max. capacity		25 t @ 2m
Rated max. capacity		20 t @ 2,5m
Min reach . heigth		8.5 m
Max reach		25.2 m
Max. height		25.5 m
Jib length		6.0 m
Max. height with jib		31.6 m
Transport dimensions		11900×3000×3110 mm
Travel speed		4.6 km/h
Grade ability		25%
Swing speed		0 ~ 2.39 r/min
Machine weight		35 t
Max line pull first layer		4 t
Cable on main winch		135 m
Cable on aux. winch		70 m
Max. line speed		134 m/min
reeved	n=8	16.75 m/min
	n=6	22.38 m/min
	n=4	33.5 m/min
	n=2	67 m/min

LOGICRANE 25.25



LOGICRANE 25.25

