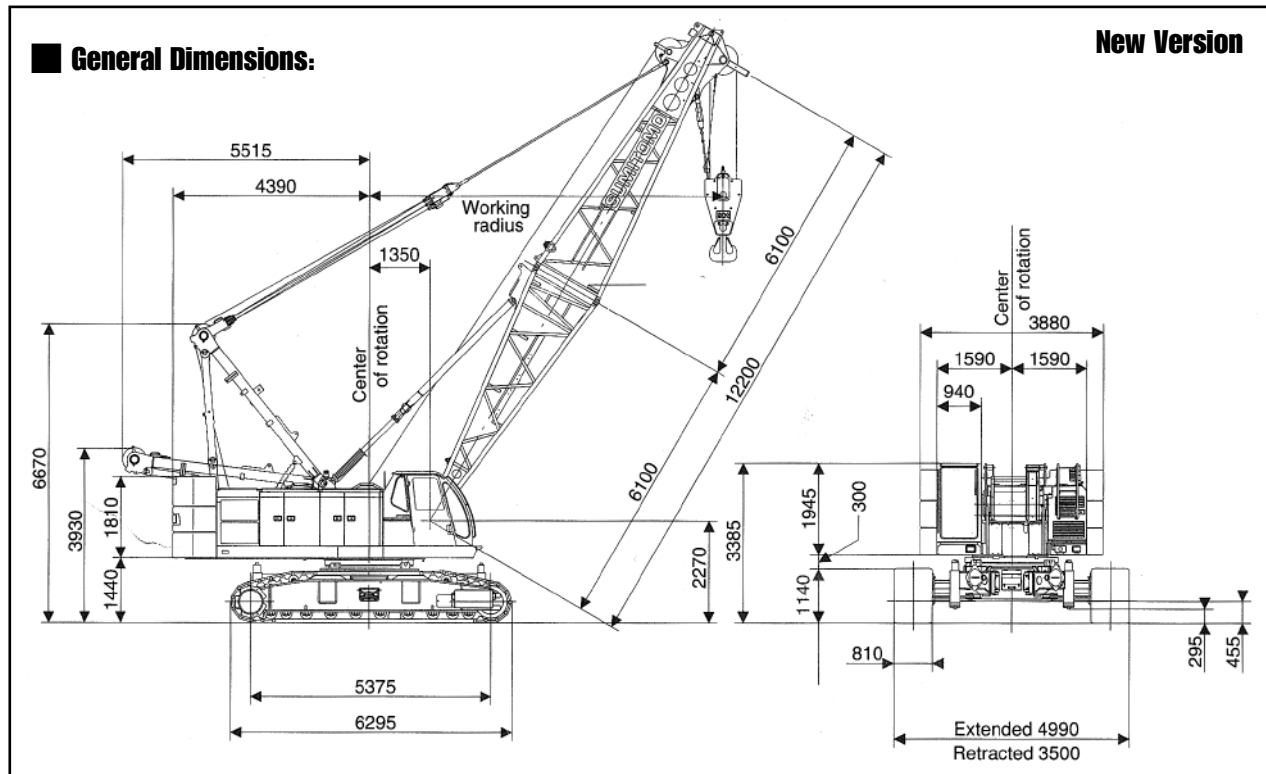


# SUMITOMO SC 900-3



Max-Lift & Radius	90TX 4m
Min boom Length	12.20m
Max Boom Length	60.95m
Fly Jib Lengths	9.15 - 22.85
Max Boom with Fly	51.80 - 18.30
Main & Aux Winch Speed Hoist & Lowering	120.2MPM
Boom Hoist & Lowering	51.2MPM
Swing Speed	2.9MRPM
Travel Speed Max	1.8Km/Hr
Engine Make & Model	Mitsubishi 6D24-T
Rated Output	184Kw/2.000min (250PS/2000RPM)
Gradient	30% (17°)
Ground Pressure	(0.91Kg/cm <sup>2</sup> )
Working Weight	85TON

Hook Block Weights			
90t	50t	30t	11t
1.2t	0.9t	0.73t	0.3t

No of Falls	LOAD t
8	90
7	77
6	66
5	55
4	44
3	30
2	22
1	11



HEAD OFFICE:  
N R C PLANT LTD.  
NEAGRON HOUSE, STANFORD ROAD,  
ORSETT, ESSEX. RM16 3BX  
Telephone: 01375 361616  
Fax: 01375 361818

sales@nrcplant.co.uk  
www.nrcplant.co.uk

# SC 900-3 LIFTING CAPACITIES MAIN BOOM

(in metric tons)

Boom length Working radius (m)	12.20	15.25	18.30	21.35	24.40	27.45	30.50	33.50	36.55	39.60	42.65	45.70	48.75	51.80	54.85	57.90	60.95
4	9.0																
4.5	80.5	77.0/4.6															
5	70.8	69.2	66.0/5.1	58.7/5.6													
6	55.0	55.0	55.0	54.9	52.9/6.2	44.0/6.7											
7	44.0	44.0	44.0	44.0	43.8	43.7	42.0/7.2	37.9/7.7									
8	36.4	36.4	36.3	36.2	36.1	36.1	36.0	35.8	30.0/8.3	30.0/8.8							
9	30.9	30.8	30.7	30.6	30.5	30.4	30.3	30.1	30.0	29.5	28.5/9.3	25.9/9.9					
10	26.7	26.6	26.5	26.4	26.3	26.2	26.1	25.9	25.8	25.7	25.7	25.5	22.0/10.4	22.0/10.9	20.5/11.5		
12	20.9	20.8	20.6	20.5	20.4	20.4	20.2	20.0	19.9	19.8	19.7	19.6	19.6	19.4	19.3	19.1	15.0/12.5
14	20.7/12.1	16.9	16.8	16.7	16.5	16.5	16.3	16.1	16.0	15.9	15.8	15.7	15.6	15.5	15.3	15.2	14.5
16		15.7/14.8	14.2	14.0	13.9	13.7	13.5	13.4	13.3	13.1	13.0	12.9	12.8	12.6	12.5	12.4	12.2
18			12.6/17.4	12.0	11.9	11.7	11.5	11.4	11.3	11.1	11.0	10.9	10.8	10.7	10.6	10.5	10.1
20				10.6	10.3	10.2	10.0	9.8	9.7	9.6	9.4	9.3	9.2	9.1	9.0	8.8	8.6
22					9.0	8.9	8.7	8.6	8.5	8.3	8.2	8.0	7.9	7.8	7.6	7.5	7.3
24					8.5/22.7	7.9	7.7	7.6	7.5	7.3	7.1	7.0	6.9	6.8	6.6	6.4	6.3
26						7.2/25.3	6.9	6.7	6.6	6.4	6.3	6.1	6.0	5.9	5.8	5.6	5.4
28							6.2	6.0	5.9	5.7	5.6	5.4	5.3	5.2	5.0	4.8	4.6
30								5.4	5.3	5.1	4.9	4.8	4.7	4.5	4.3	4.1	3.9
32								5.2/30.6	4.8	4.6	4.4	4.2	4.1	3.9	3.7	3.5	3.2
34									4.5/33.2	4.1	3.9	3.7	3.6	3.4	3.2	2.9	2.7
36										3.7/35.9	3.5	3.3	3.1	2.9	2.7	2.5	2.3
38											3.1	2.9	2.7	2.5	2.3	2.1	1.8
40											3.0/38.5	2.6	2.3	2.1	1.9	1.7	1.5
42												2.3/41.2	2.0	1.8	1.6		
44													1.8/43.5	1.6			

## Notes

- Capacities shown are in metric tons and are determined according to BS 1757 - over the side - with machine standing level on firm supporting surface under ideal job conditions. Deductions from the lifting crane capacities must be made for weight of hook block.

2. See duty charts

## 3. WORKING WEIGHT AND GROUND PRESSURE

Kind of hook block	90t	50t	30t	11t	Jib length (m)	9.15	13.70	18.30	22.85	Shoe width	Weight	Pressure			
Weight of hook block (t)	1.2t	0.9t	0.73t	0.3t	MAX LOAD ON EACH JIB LENGTH 11T								810mm	85.0t	0.89 Kpa (0.91Kg/cm <sup>2</sup> )