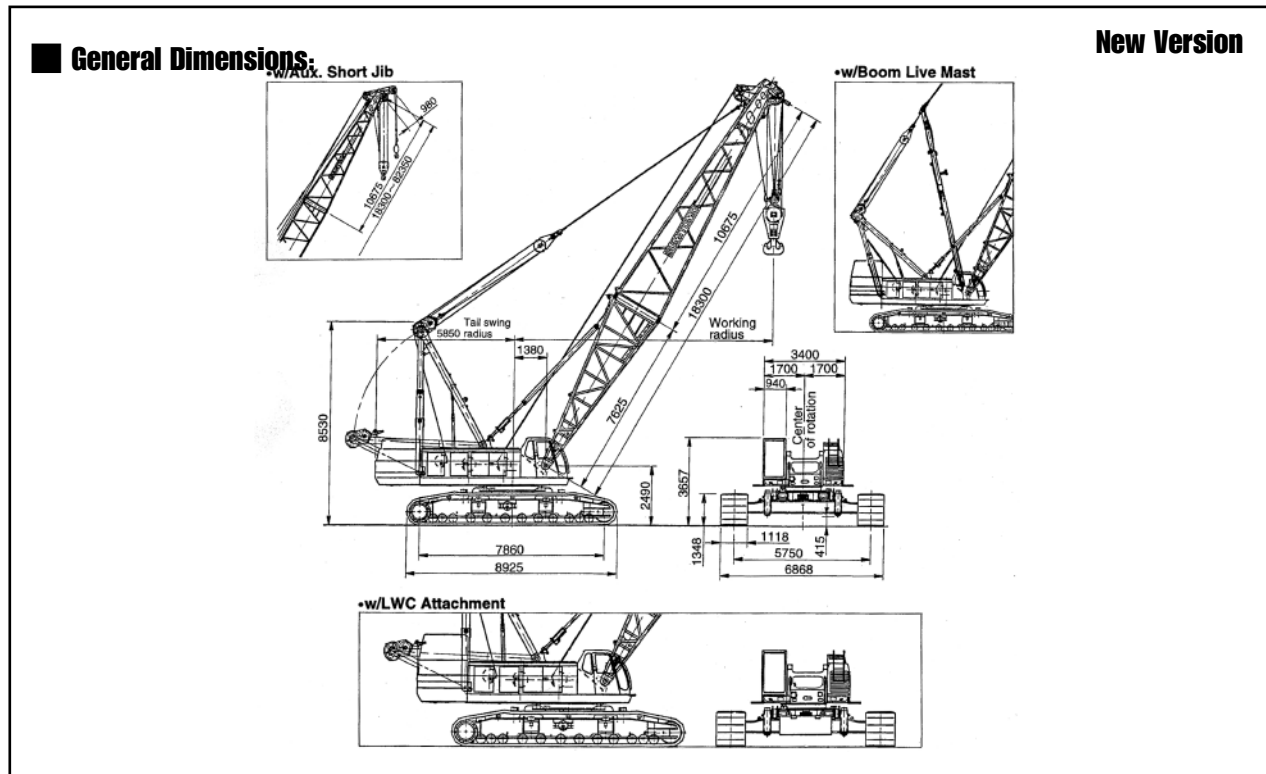


# SUMITOMO SC 1500-2



Max-Lift & Radius	150t 5m
Min boom Length	18.30m
Max Boom Length	85.40m
Fly Jib Lengths	12.20m 18.30m 24.40m 30.50m
Max Boom with Fly	73.20 + 30.50
Main & Aux Winch Speed Hoist & Lowering	100.2MPM
Boom Hoist & Lowering	23.1 MPM
Swing Speed	1.9/14/0.6/0.3RPM
Travel Speed Max	1.1Km/Hr
Engine Make & Model	HINO K13C-TJ
Rated Output	235Kw/2.050min (320PS/2050RPM)
Gradient	30% (17°)
Ground Pressure	0.89Kgs/cm <sup>2</sup>
Working Weight	164t

Hook Block Weights				
150t	100t	80t	35t	13.5t
2.6t	2.2t	1.4t	0.9t	0.5t

No of Falls	LOAD t
13	150
12	140
11	130
10	100
8	90
7	80.0
6	75
5	62
4	50
3	38
2	26
1	13.5t



HEAD OFFICE:  
N R C PLANT LTD.  
NEAGRON HOUSE, STANFORD ROAD,  
ORSETT, ESSEX. RM16 3BX  
Telephone: 01375 361616  
Fax: 01375 361818

sales@nrcplant.co.uk  
www.nrcplant.co.uk

# SC 1500-2 LIFTING CAPACITIES MAIN BOOM

## With Standard Counterweight - Without Boom Live Mast

Boom length (Working radius in)	18.30	21.35	24.40	27.45	30.50	33.55	36.60	39.65	42.70	45.75	48.80	51.85	54.90	57.95	61.00	64.05	67.10	
5.0	150.0																	
5.5	148.0	140.6/5.6																
6.0	146.0	138.8	130.0/6.1															
6.5	144.1	135.9	130.0	122.8/6.6														
7.0	136.6	133.5	129.7	120.9	122.8/7.2	100.0/7.7												
8.0	112.6	112.5	112.5	112.5	109.3	100.0/8.6	90.0/8.2	88.9/8.7										
9.0	93.6	93.5	93.5	93.4	93.3	93.3	90.0	88.1	80.0/9.5	75.0/8.8								
10.0	80.0	79.8	79.8	79.7	79.5	79.6	79.6	79.4	79.4	75.0	70.8/10.3	66.1/10.9	61.9/11.4	57.9/11.9				
12.0	61.6	61.5	61.4	61.3	61.1	61.1	61.1	60.9	60.8	60.8	60.6	60.4	60.3	57.7	53.5/12.5	47.0/13.0	41.6/13.5	
14.0	49.9	49.7	49.6	49.5	49.2	49.3	49.3	49.0	48.9	48.9	48.7	48.5	48.4	48.2	48.0	44.2	41.2	
16.0	41.8	41.6	41.4	41.3	41.0	41.1	41.0	40.8	40.7	40.6	40.4	40.2	40.1	39.9	39.7	39.6	39.4	
18.0	37.5/17.4	35.6	35.4	35.3	35.0	35.0	35.0	34.7	34.6	34.5	34.3	34.1	34.0	33.8	33.6	33.5	33.3	
20.0		31.0	30.8	30.7	30.4	30.4	30.4	30.1	30.0	29.9	29.6	29.4	29.3	29.1	28.9	28.8	28.6	
22.0			27.2	27.1	26.7	26.7	26.7	26.4	26.3	26.2	25.9	25.7	25.7	25.4	25.2	25.1	24.9	
24.0				26.1/22.7	24.1	23.8	23.8	23.7	23.5	23.2	23.0	22.7	22.7	22.4	22.2	22.1	21.9	
26.0					22.5/25.3	21.4	21.4	21.3	21.0	20.9	20.8	20.5	20.3	20.2	19.9	19.7	19.6	19.4
28.0						19.4	19.3	19.3	19.0	18.8	18.7	18.4	18.2	18.1	17.8	17.6	17.5	17.3
30.0							17.6	17.5	17.2	17.1	16.9	16.7	16.4	16.3	16.1	15.8	15.5	15.5
32.0								17.2/30.6	16.0	15.7	15.6	15.4	15.1	14.9	14.8	14.5	14.3	14.0
34.0									15.2/33.2	14.4	14.3	14.1	13.8	13.6	13.5	13.2	13.0	12.9
36.0										13.4/35.9	13.1	13.0	12.7	12.4	12.3	12.0	11.8	11.7
38.0											12.1	12.0	11.7	11.4	11.3	11.0	10.8	10.7
40.0												11.9/38.5	11.1	10.7	10.5	10.4	10.1	9.9
42.0													10.6/41.2	9.9	9.7	9.6	9.3	9.0
44.0														9.3/43.8	9.0	8.8	8.5	8.3
46.0															8.3	8.2	7.9	7.6
48.0																8.2/46.5	7.6	7.3
50.0																	7.3/49.1	6.7
52.0																		6.5
54.0																		
56.0																		
58.0																		
60.0																		
62.0																		
64.0																		
66.0																		
No. in part	13	13	11	11	11	10	8	8	7	6	6	6	5	5	5	4	4	

Notes

- Capacities shown are in metric tons and are determined according to BS 1757 - over the side - with machine standing level on firm supporting surface under ideal job conditions. Deductions from the lifting crane capacities must be made for weight of hook block.

Kind of hook block	150t	100t	80t	35t	13.5t
Weight of hook block (t)	2.6t	2.2t	1.4t	0.9t	0.5t

2. See duty charts

Jib length (m)	12.20	18.30	30.50
MAX LOAD ON EACH JIB LENGTH 13.5t			

### WORKING WEIGHT AND GROUND PRESSURE

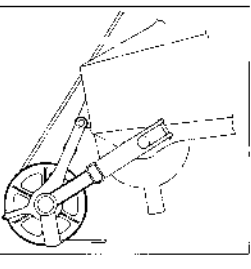
Shoe width	Weight	Pressure
1118mm	164.0t	87.3pa (0.89 Kg/cm <sup>2</sup> )

## With Standard Counterweight - With Boom Live Mast

Boom length (Working radius in)	48.80	51.85	54.90	57.95	61.00	64.05	67.10	70.15	73.20	76.25	79.30	82.35	85.40
5.0													
5.5													
6.0													
6.5													
7.0													
8.0													
9.0													
10.0	75.0/10.3	71.0/10.9	66.5/11.4	62.0/11.9									
12.0	62.0	61.9	61.7	61.7	58.0/12.5	53.9/13.0	47.6/13.5						
14.0	49.8	49.6	49.5	49.4	49.2	49.1	47.3	42.5	37.7/14.6	33.9/15.1	30.4/15.6		
16.0	41.3	41.1	40.9	40.9	40.7	40.5	40.5	40.3	36.8	33.4	30.1	27.3/16.2	24.1/16.8
18.0	35.1	34.9	34.7	34.6	34.4	34.2	34.0	34.0	34.0	32.4	29.2	26.4	23.5
20.0	30.3	30.1	29.9	29.8	29.6	29.4	29.3	29.1	29.1	29.1	27.4	24.8	21.8
22.0	26.5	26.3	26.1	26.0	25.8	25.6	25.5	25.3	25.3	25.3	25.1	22.6	19.9
24.0	23.4	23.2	23.0	22.9	22.7	22.5	22.4	22.2	22.2	22.2	22.0	20.7	18.2
26.0	20.9	20.7	20.5	20.4	20.2	20.0	19.9	19.7	19.7	19.6	19.4	19.1	16.7
28.0	18.8	18.6	18.4	18.2	18.0	17.8	17.7	17.5	17.5	17.5	17.2	17.0	15.3
30.0	17.0	16.8	16.6	16.4	16.2	16.0	15.9	15.7	15.7	15.6	15.4	15.2	14.1
32.0	15.4	15.2	15.0	14.8	14.6	14.4	14.3	14.1	14.1	14.1	13.8	13.6	13.0
34.0	14.0	13.8	13.6	13.5	13.3	13.1	12.9	12.7	12.7	12.7	12.4	12.2	12.0
36.0	12.9	12.7	12.4	12.3	12.1	11.9	11.7	11.5	11.5	11.5	11.2	11.0	11.0
38.0	11.8	11.6	11.4	11.2	11.0	10.8	10.7	10.5	10.4	10.4	10.1	9.9	9.9
40.0	10.9	10.7	10.5	10.3	10.1	9.9	9.7	9.5	9.4	9.4	9.2	9.0	8.9
42.0	10.1	9.8	9.6	9.4	9.2	9.0	8.9	8.6	8.6	8.6	8.3	8.1	8.1
44.0	9.4/43.8	9.1	8.9	8.7	8.5	8.2	8.1	7.9	7.8	7.8	7.5	7.3	7.3
46.0		8.4	8.2	8.0	7.8	7.6	7.4	7.2	7.1	7.1	6.8	6.6	6.6
48.0		8.3/46.5	7.6	7.4	7.2	6.9	6.8	6.5	6.5	6.5	6.2	6.0	5.9
50.0			7.3/49.1	6.8	6.6	6.4	6.2	6.0	5.9	5.9	5.6	5.4	5.3
52.0				6.4/51.7	6.1	5.8	5.7	5.4	5.4	5.3	5.1	4.8	4.6
54.0					5.6	5.4	5.2	5.0	4.9	4.8	4.6	4.3	4.0
56.0					5.5/54.4	4.9	4.7	4.5	4.4	4.4	4.1	3.8	3.5
58.0						4.7/57.0	4.3	4.1	4.0	3.9	3.5	3.3	3.0
60.0							3.9/59.7	3.6	3.4	3.4	3.1	2.8	2.5
62.0								3.2	3.0	3.0	2.6	2.4	
64.0									3.1/62.3	2.6	2.6		
66.0										2.4/64.9	2.2		
No. in part	6	6	6	5	5	5	4	4	4	3	3	3	2

### SC1500-2 AUXILIARY SHORT JIB CAPACITIES:

Note: Jib capacities are subject equal to the figure shown for the Max. 13.5ton boom length up to 32.35m, an see restriction by the main unit capacity shown above. As to the details, please consult us or nearest distributor.



Auxiliary short jib (Option)